

ICRM Linkage with Programmes



ICRM SEMINAR



Dr Shaidah Asmall /Prof Lesley Bamford



05/12/2022



health

Department:
Health
REPUBLIC OF SOUTH AFRICA



National Development Plan (2030)

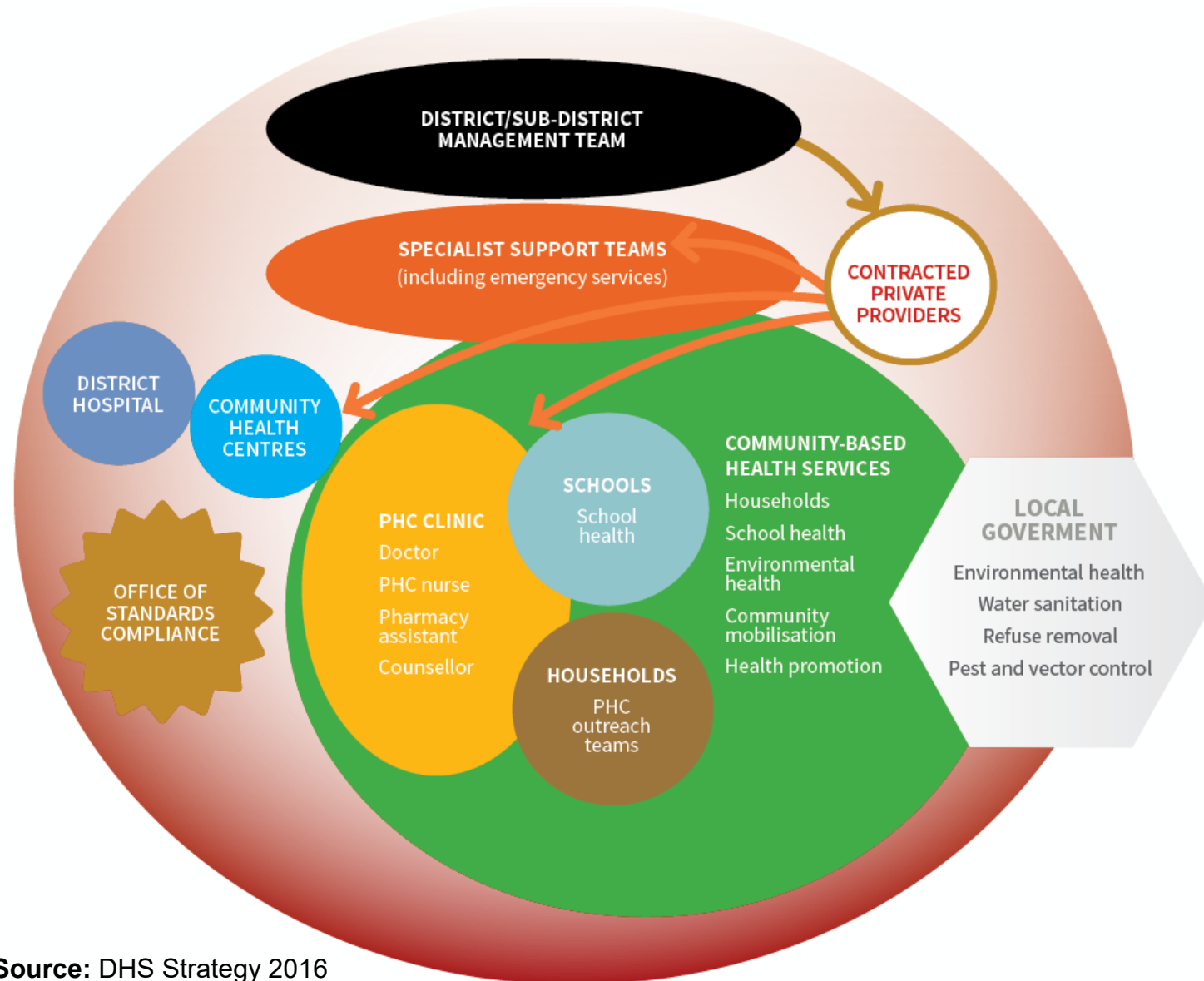


- Achieved **an infant mortality rate** of fewer than 20 deaths per thousand live births, including an under-five mortality rate of less than 30 per thousand
- Achieved a significant shift in the **equality, efficiency, effectiveness** and **quality** of health care provision
- Achieved **universal health coverage**
- Significantly reduced the risks posed by the **social determinants of disease** and adverse ecological factors

Primary healthcare (PHC) re-engineering



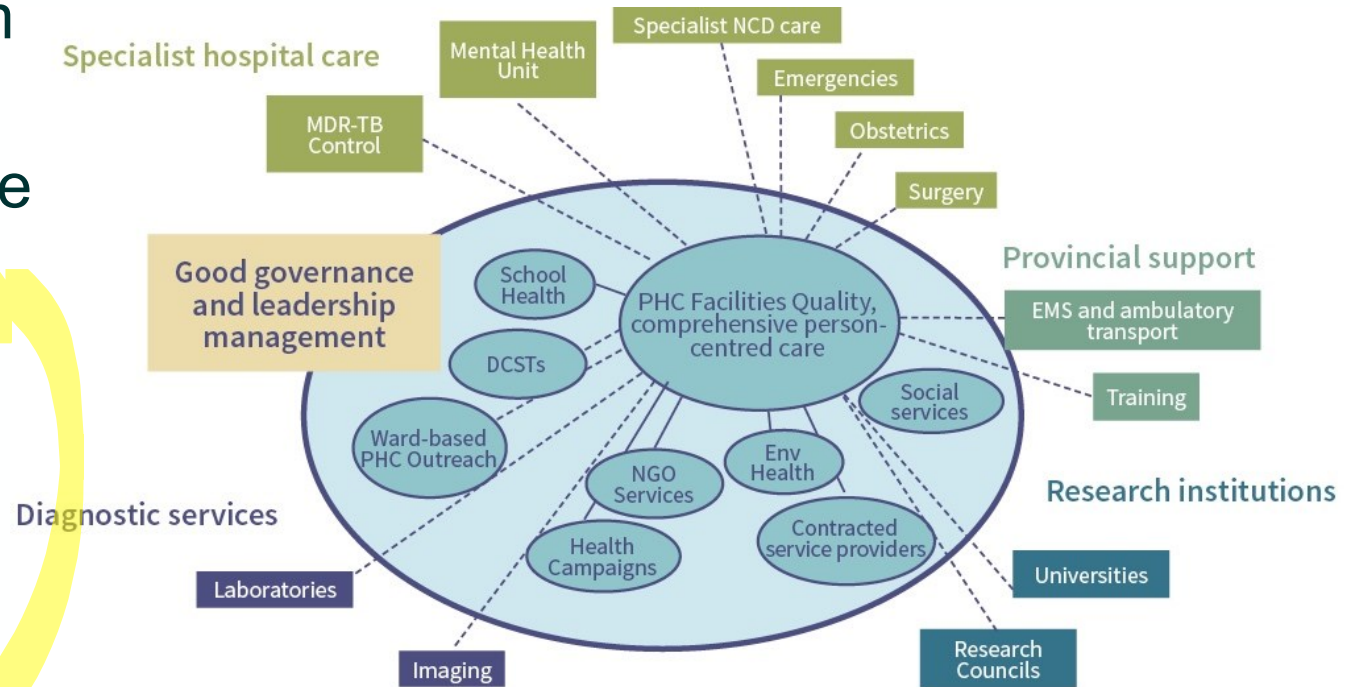
District Health System model with **PHC** as a **platform** for delivery of health services is the **main implementation mechanism**



Primary healthcare clinics

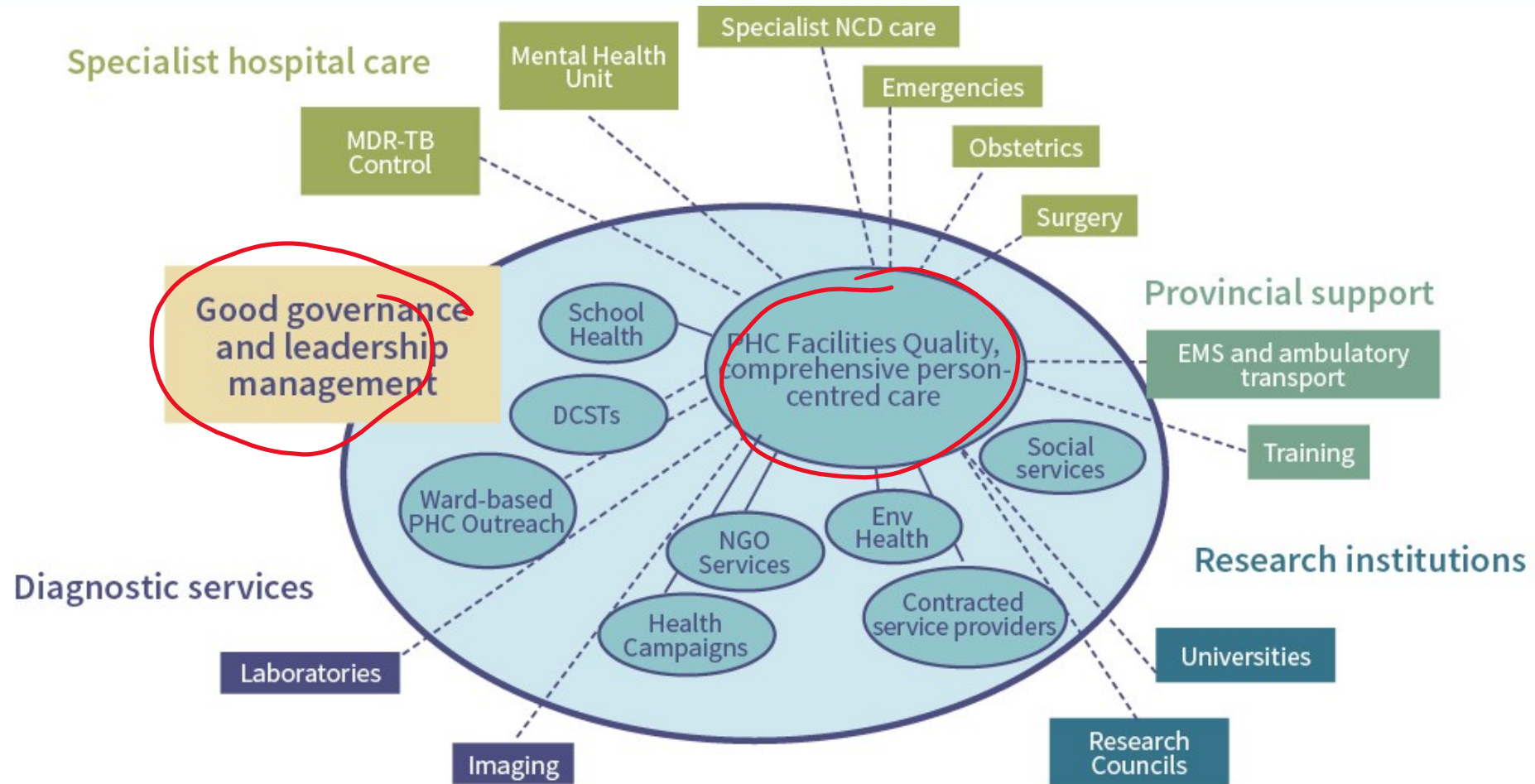


- **First point of contact** between the population and the health system
- **Act as a gatekeeper** to higher levels of care
- Need to **promote good health outcomes**, rather than just serve ill-health by offering a curative service



Refer to Slide 43

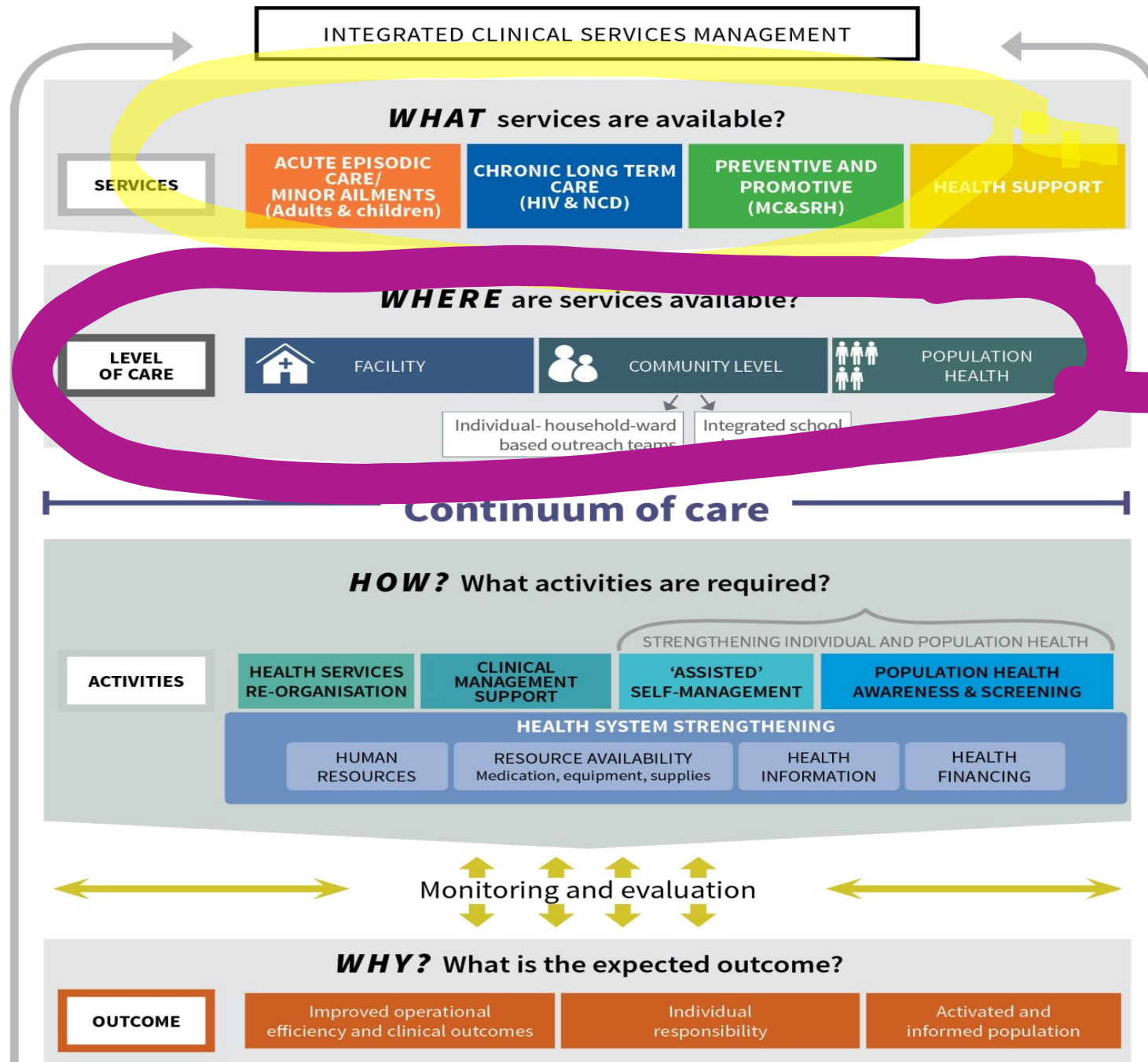
Ideal clinic concept



DCST: District-based clinical specialist teams EMS: Emergency medical services ENV: Environmental MDR-TB: Multi-drug-resistant tuberculosis NCD: Non-communicable disease NGO: Non-governmental organisation PHC: Primary health care

Source: SAHR: 2014/15-Chapter 2-page 25

ICSM model

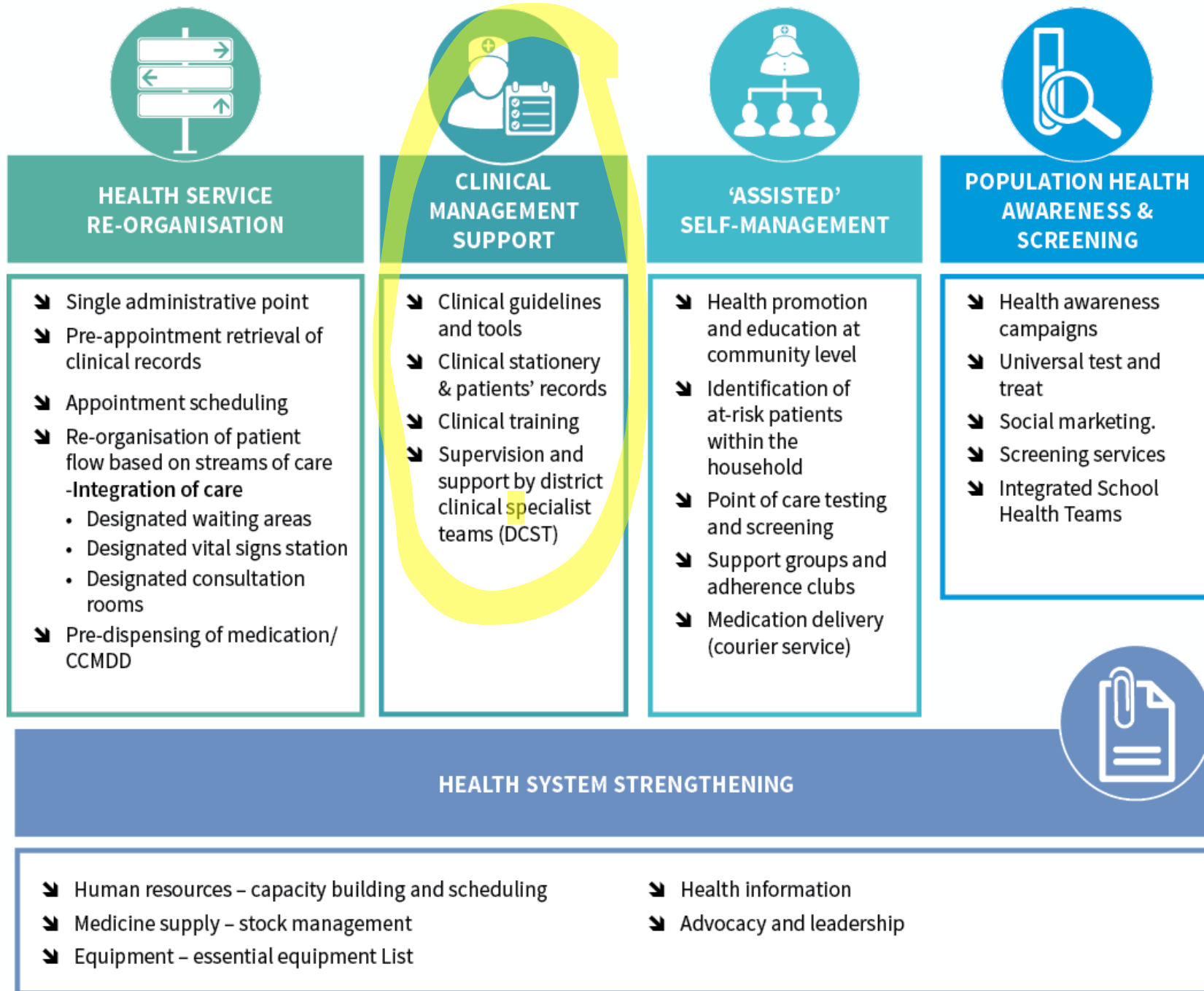


Clinical programmes

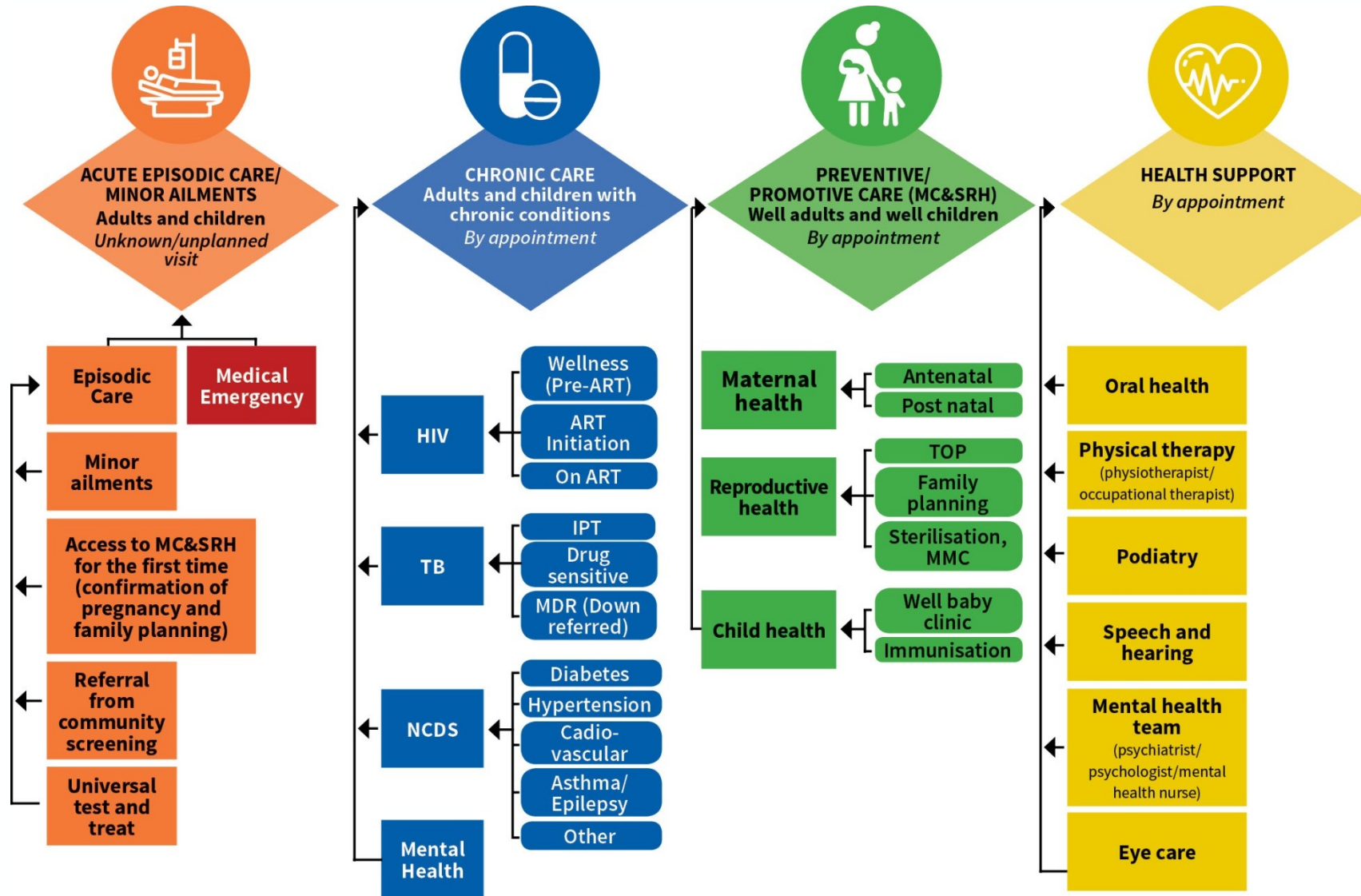


Service delivery platform

ICSM model components



Programmes delivered at PHC



Interdependence of platform and programmes

